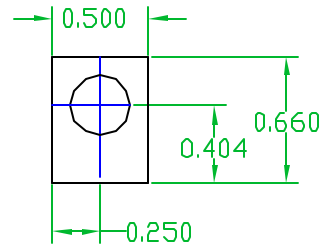
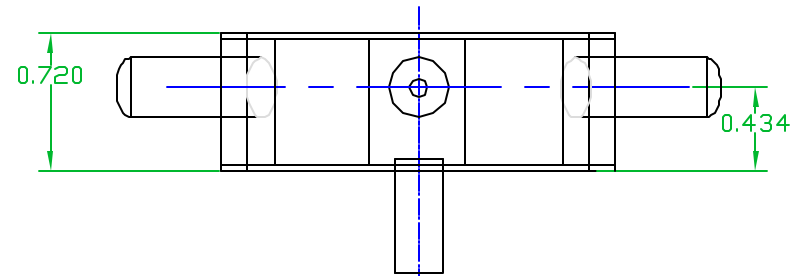


$\frac{3}{32}$ OD copper tube. Use 63-37 solder to attach. All tubes are the same.

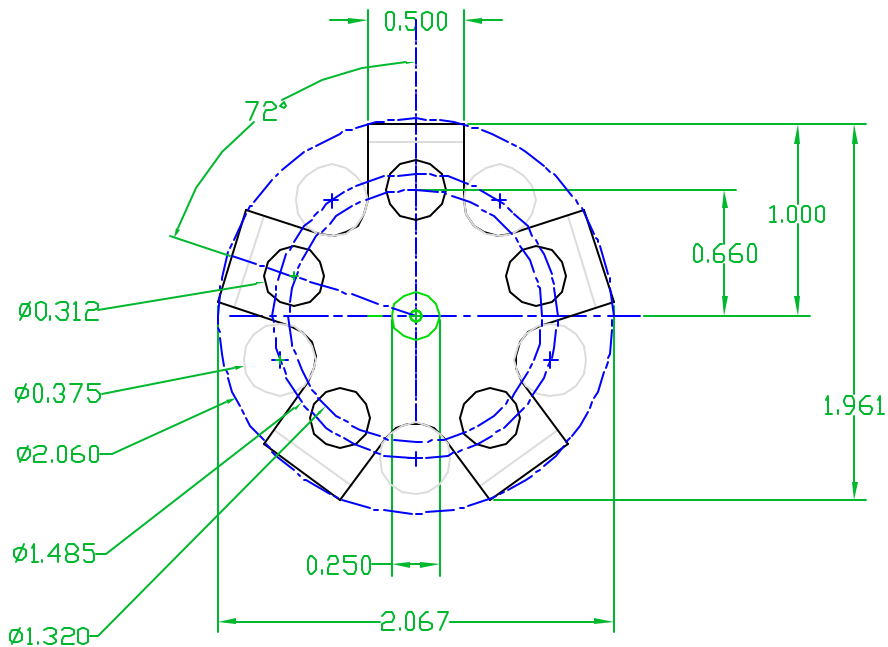
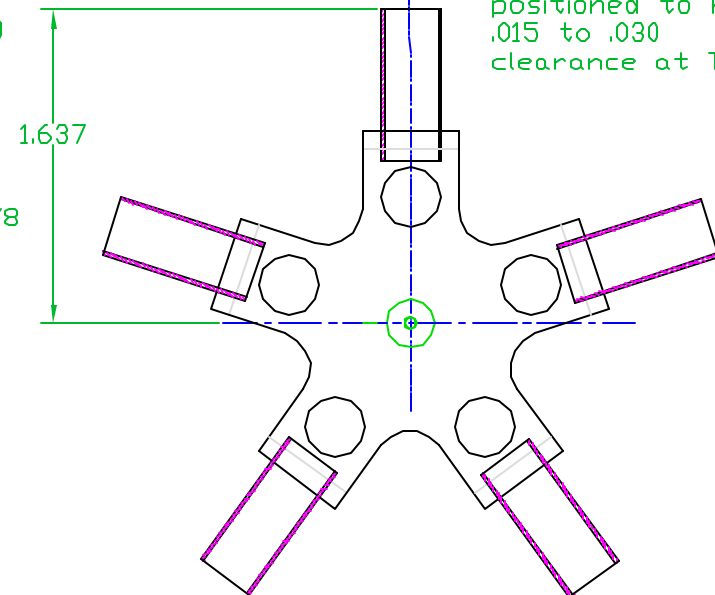
Frame front and back are .031 brass. The back frame can have mounting holes added that are not included on the front. The front has a $\frac{1}{4}$ hole for the main shaft bearing. The part can be laid out using circles as shown or adhesive backed templates can be used. Cylinder holders are soldered to the 5 ends.



Cylinder mounts $\frac{1}{2}$ X $\frac{1}{2}$, $\frac{1}{16}$ to $\frac{1}{8}$ thick brass. Qty 5



Cylinder is positioned to have .015 to .030 clearance at TDC.



David Kerzel

Pompano Beach, Florida USA

This drawing may be used or modified for any nonprofit purpose. All accuracy and safety issues are the users responsibility and the provider and originator are in no way responsible or liable. (C) David Kerzel 2005

Assembly:

Tube CO2, 3 Cylinder Radial

Title:

Frame and Pipes

Date: 1/16/2005

Drawing

Revision: 1.0

T5_CO2-04