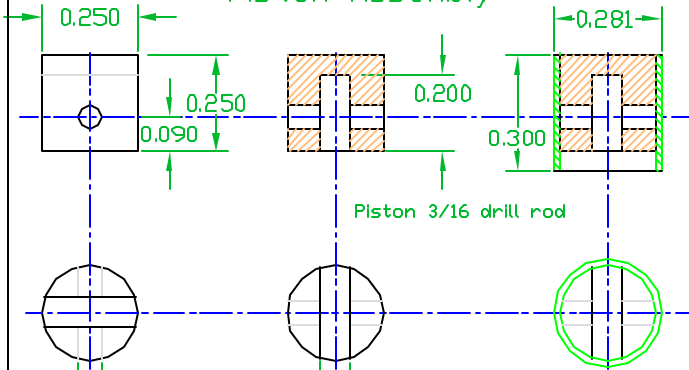
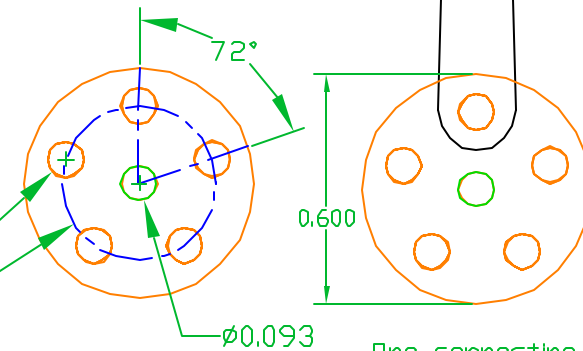


Piston Assembly

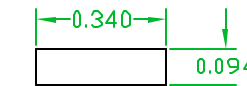
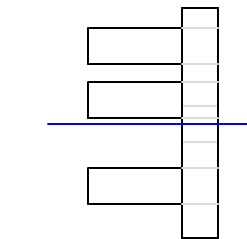


Piston 3/16 drill rod

Master Connecting Rod disk is made from .093 brass. Center hole allows disk to rotate on crank shft freely. Pins are pressed in outer 5 holes for conecing rods.

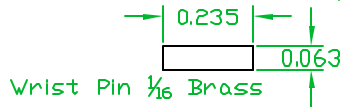


One connecting rods is glued to disk to make the Master Rod. All other rods rotate freely at both ends. This is normally for the vertical cylinder.



Master Connecting Rod Pin 3/32 Drill rod, Qty 5

Make piston center from 1/4 aluminum rod. Saw slot, drill wrist pin perpendicular to slot.

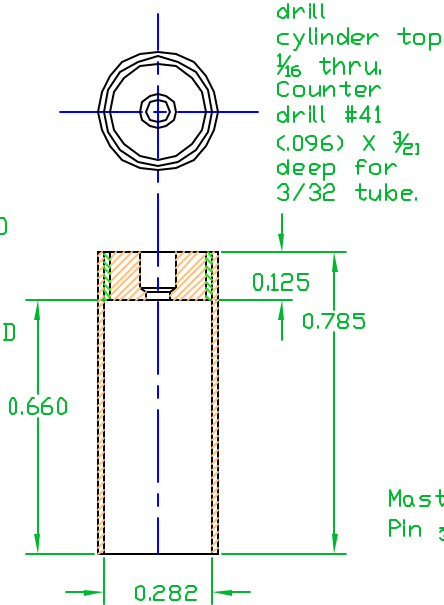


Piston center is glued in 3/32 dia brass or aluminum tube. Use epoxy or Loctite. Wrist pin is captive.

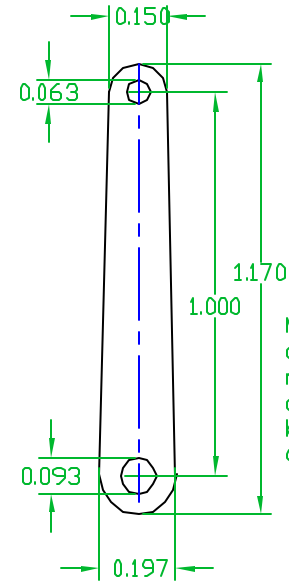
Center hole for tube is drilled thru 1/16 and counter bored 3/32 X 3/32 deep.

Cylinder is 3/32 ID (1/16 OD) brass tube. center is 1/4 OD brass with 3/32 OD tube to fit.

Make a wood plug .660 long to support the top of the cylinder while soldering with half hard solder.



drill cylinder top 1/16 thru. Counter drill #41 (.096) X 3/21 deep for 3/32 tube.



Make sure connecting rod moves freely on both pins before assembling.

Connecting Rods made from .062 aluminum. Holes or slots can be added to reduce weight or improve looks.

David Kerzel

Pompano Beach, Florida USA

This drawing may be used or modified for any nonprofit purpose. All accuracy and safety issues are the users responsibility and the provider and originator are in no way responsible or liable. (C) David Kerzel 2005

Assembly:
Tube CO2, 5 Cylinder Radial

Title:
Piston Cylinder and Rod

Date: 1/14/2005

Drawing:

Revision: 10

T5_CO2-02