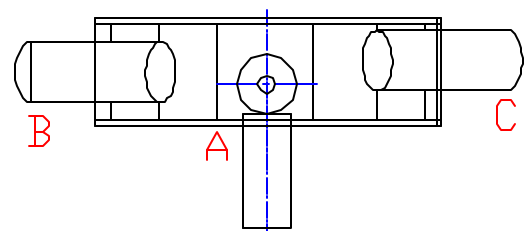


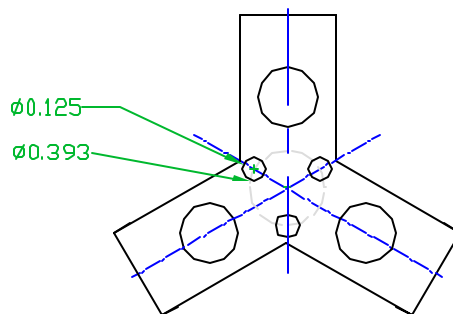
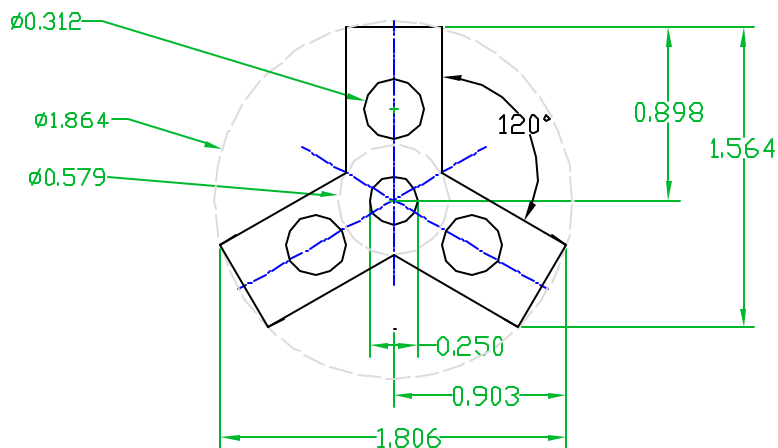
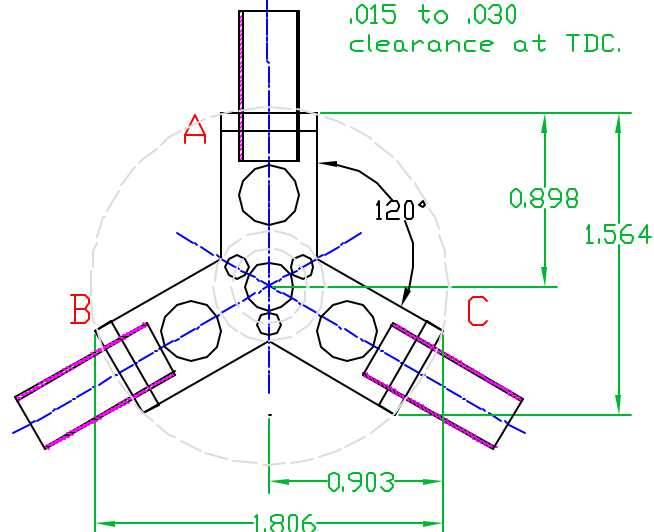
3/32 OD copper tube. Use 63-37 solder to attach. Each tube has a different radius for the cylinder position offset.

Frame front and back are .031 brass.

The back frame has 3 1/8 diameter mounting holes that are not included on the front. The front has a 1/4 hole for the main shaft bearing. The part can be laid out using circles as shown or adhesive backed templates can be used. Cylinder holders are soldered to the 3 ends. The cylinder holders have offsets for the 3 connecting rods can be used on one crank pin.



Cylinder is positioned to have .015 to .030 clearance at TDC.



<h1>David Kerzel</h1>	
Pompano Beach, Florida USA	
This drawing may be used or modified for any nonprofit purpose. All accuracy and safety issues are the users responsibility and the provider and originator are in no way responsible or liable. (C) David Kerzel 2004	
Assembly: Tube CO2, 3 Cylinder Radial	
Title: Frame and Pipes	
Date: 7/4/2004	Drawing
Revision: 1.0	T3_CO2-04